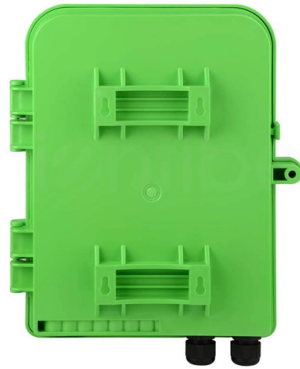


850 Single-Mode Optical Module



Overview

Choose our 850nm single-mode VCSEL with polarization lock for various high-precision sensing applications that benefit from low-power consumption. Huawei eKit offers a comprehensive series of pluggable optical modules in the Huawei eKit portfolio. These compact optical transceivers offer a access and ring network, storage network, and. SFP wavelength refers to the nominal center wavelength of the laser transmitter inside a Small Form-factor Pluggable (SFP) optical transceiver. It defines the specific light spectrum—commonly 850 nm, 1310 nm, or 1550 nm—used to transmit data over optical fiber. The selected wavelength determines. Juniper Networks® has platforms ranging from the Juniper Networks CTP Series Circuit to Packet Platforms, BX Series Multi-Access Gateways, E Series Broadband Services Routers, M Series Multiservice Edge Routers, MX Series 3D Universal Edge Routers, to the T Series Core Routers. com Europe FS EuropeFREE SHIPPING on Orders Over EUR 79 VAT excl. Germany HomeOptical. central wavelength 850nm, with TEC,output power 1mW, Tolerance ± 1 . Higher-order longitudinal and transversal modes are suppressed by.

Article Content

Customized 1000BASE-SX SFP 850nm 550m DOM

1000BASE-SX compatible SFP transceiver supports up to 550m link lengths over multi-mode fibre (MMF) using a wavelength of 850nm via an LC connector.

Optic Modules Datasheet

Features and Benefits The following table lists the different pluggable optic modules and supported platforms, along with the technical specifications for each.

SFP Wavelength Guide: 850nm vs. 1310nm vs. 1550nm

Choosing the correct SFP wavelength —whether 850 nm for multimode short-reach, 1310 nm for medium-reach single-mode, or 1550 nm for long-haul and DWDM—is critical for reliable

How Wavelength (850/1310/1550nm) Affects Transceiver Reach —

I-WOLON ka- i-optical transceiver lineup—produced by Wuhan Wolon Cloud Network Communication Technology Co., Ltd.—covers 850 nm SR modules for cost-sensitive, short-reach MMF deployments,

850nm SM Fiber coupled VCSEL Laser diode (with TEC)

850 nm single-mode VCSELs are the perfect choice for demanding sensor applications due to their improved optical characteristics. Higher-order longitudinal and transversal modes are suppressed by

The Key Differences Between 1-core, 2-core, Single

Understanding 1-core, 2-core, Single Mode, and Multi-mode optical modules helps you design efficient networks. Whether you're working on long

Optical SFP Module 10Gbps SFP+ Transceiver, MM, 850nm, 300mm

DESCRIPTION transmitter, a PIN photodiode integrated with a trans impedance preamplifier (TIA) and MCU control unit. All modules satisfy class I laser safety requirements.

Huawei QSFP-DD-400G-SR4 400G Optical Transceiver Module

The Huawei QSFP-DD-400G-SR4 is a high-performance, hot-pluggable optical transceiver designed for 400 Gigabit Ethernet links over multi-mode fiber (MMF). Utilizing the QSFP-DD (Quad Small Form

QFX-QSFP-40G-SR4

Juniper SFP28 Module - For Data Networking, Optical Network - 1 x LC/PC 25GBase-LR Duplex Network - Optical Fiber - Single-mode - 25 Gigabit... Instant Rebate | \$723 (41%)

PerkinElmer | Science with Purpose

We believe in the power of science to transform our world. Together with scientists and operators worldwide, we empower progress by providing trusted insights

Huawei Switches Viewing Optical Port Receiving and Sending

Use the command display transceiver to view the optical module information of all optical ports, and use the command display transceiver interface interface-type interface-number to view the

Optical Transceiver Market Size, Share, and Trends Analysis 2032

The global Optical Transceiver market size was estimated at USD 13.08 Billion in 2024 and is estimated to grow at a CAGR of 15.41% from 2025 to 2032.

Arista Optics Modules and Cables

SFP+ Optical interoperability with 10GbE XFP, X2 and XENPAK pluggable form factors QSFP+ Universal transceiver for 40G operations over duplex multi-mode and single-mode fiber.

1000BASE-SX SFP 850nm 550m | HEYOPTICS

1000BASE-SX SFP Transceiver Module (MMF, 850nm, 550m, LC, DOM) SFP transceiver supports up to 550m link lengths over multi-mode fiber (MMF) using a wavelength of 850nm via an LC connector.

Customized 1000BASE-SX SFP 850nm 550m DOM Duplex LC MMF Optical ...

1000BASE-SX compatible SFP transceiver supports up to 550m link lengths over multi-mode fibre (MMF) using a wavelength of 850nm via an LC connector. Digital diagnostics monitoring is available

Huawei eKitEngine Optical Module Datasheet

Huawei eKit offers a comprehensive series of pluggable optical modules in the Huawei eKit portfolio. The wide variety of modules gives you flexible and plug-and-play options for all types of interfaces.

850nm Laser Diode, 550mW Peak Pulsed Output Power

Available with optional fiber Bragg grating. This option provides a narrowed spectral linewidth and tighter wavelength tolerance relative to the specified center wavelength.

Datasheet

The FCVC is a fiber-coupled, vertically-emitting, single-mode diode laser based on a semiconductor quantum-well configuration. The diode chip is housed in a TOCAN package, featuring a power

VI SYSTEMS

TRANSIMPEDANCE AMPLIFIER ICS FOR RECEIVER-SIDE SIGNAL CONVERSION IN HIGH-SPEED OPTICAL LINKS. EVALUATION BOARDS EXPOSE THE INSTALLED VIS DRIVER AND

850 Single Mode Polarization-Locked VCSELs | Coherent

Choose these 850 nm VCSELs for demanding sensing applications that benefit from their single transverse and longitudinal mode output and their locked linear polarization.

Contact Us

For more information, pricing, or custom solutions, please contact us:

Website: <https://www.truhope.co.za>

Email: sales@truhope.co.za

Phone: +27 64 987 3021

Address: 22 Loop Street, Cape Town, 8001, South Africa

This document is for informational purposes only. Specifications subject to change without notice.

