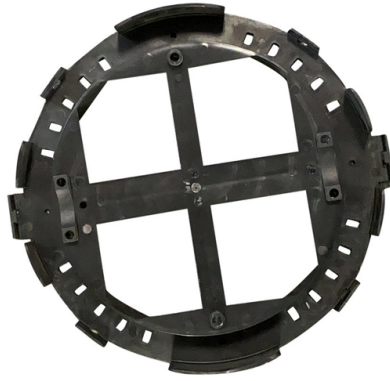


Access Switch S57 Series



Overview

Built on Huawei's unified Versatile Routing Platform (VRP), CloudEngine S5731-S switches provide enhanced Layer 3 features, simplified Operations & Maintenance (O&M), Intelligent Stack (iStack) technology — allowing multiple stacking-capable switches to function as a single. Built on Huawei's unified Versatile Routing Platform (VRP), CloudEngine S5731-S switches provide enhanced Layer 3 features, simplified Operations & Maintenance (O&M), Intelligent Stack (iStack) technology — allowing multiple stacking-capable switches to function as a single. The CloudEngine S5731-S series offers a range of standard gigabit access switches, with all-GE electrical/optical ports and fixed 10 GE uplink ports. Built on next-generation high-performance processors and. Huawei S5700 series Ethernet switches are next-generation energy-saving GE switches designed to provide high-bandwidth access and Ethernet multi-service aggregation. They are widely used as access/aggregation switches in enterprise campus networks or gigabit access switches in data centers.

Article Content

[CloudEngine S5736-S Series Switches | Huawei](#)

CloudEngine S5736-S Series are switches designed for the Wi-Fi 6 era, featuring 24 downlink ports, four 10 GE uplink ports and one extended slot. [Learn more.](#)

[SIMATIC S7-1500 PLC - High-Performance Controller](#)

SIMATIC S7-1500 is a high-performance PLC with advanced diagnostics, fast processing, and seamless TIA Portal integration for industrial automation.

[CloudEngine S5732-H Series Hybrid Optical-Electrical Switches](#)

CloudEngine S5732-H Series Hybrid Optical-Electrical Switches CloudEngine S5732-H series hybrid optical-electrical switches are brand-new 10GE access switch that provides 24-port (optical) + 24

[CloudEngine S5735I-S-V2 Series Switches | Huawei](#)

Huawei CloudEngine S5735I-S-V2 series industrial switches (DIN rail-mounted) are next-generation industrial switches that provide flexible all-gigabit access and

[CloudEngine S5731-S Series Switches Datasheet](#)

It allows plug-and-play access switches and APs. In addition, the CloudEngine S5731-S supports service configuration templates. The templates are configured on core devices and automatically

[Huawei L-64AP-S57 License 64 APs for S57 Series Controller](#)

The Huawei L-64AP-S57 represents a cornerstone in wireless networking, offering a robust and scalable solution for managing access point resources. As a part of Huawei's S57 series, this wireless access

[Info-Finder \(DatacomMate\): One-stop intelligent platform for product ...](#)

[About Huawei](#) [About Huawei](#) [About Huawei](#) [Enterprise Branch Office](#) [News Room](#) [Huawei Events](#) [Huawei Facts](#) [TECH4ALL](#) [How to Buy](#) [Get Pricing](#) [eDeal](#) [Ordering System](#) [Find a ...](#)

[CloudEngine S5736-S Series Switches | Huawei](#)

CloudEngine S5736-S Series Switches are standard multi-GE access switches for the Wi-Fi 6 era, featuring 24 downlink ports, four 10 GE SFP+ uplink ports, and

[Huawei L-1AP-S57 License for S57 Wireless AC AP Resource 1AP](#)

Huawei L-1AP-S57 Overview The Huawei L-1AP-S57 is a distinguished member of the S57 series, offering wireless access controller AP resource authorization for a single AP. This device stands out

Huawei S3700, S5700 and S6700 Switches Support Guide, Manuals

S3700& S5700& S6700 Series: Access product manuals, HedEx documents, product images and visio stencils.

S1700, S2700, S3700, S5700, and S6700 Box Switches Products ...

Function.S6700 access 10G serverEth-trunkMeeting RoomParkOfficeHotelSOHOSubwayS5700-PWRS5700-PWRS7700IntranetInternetWireless AC

CloudEngine S5700 Series Switches Product Description (V600)

CloudEngine S5700 series Ethernet switches (S5700 for short) are Huawei's next-generation energy-saving gigabit Ethernet switches that provide high-bandwidth access and Ethernet multi-service

S5720-SI Datasheet (Detailed Version)

The S5720-SI series switches (S5720-SI for short) are next-generation standard gigabit Layer 3 Ethernet switches that provide flexible full gigabit access and cost-effective fixed GE ports and 10GE

S5720-EI

Huawei S5720-EI series provide flexible all-gigabit access and enhanced 10 GE uplink port scalability. They are widely used as access/aggregation switches in enterprise campus networks or gigabit

S5720-SI Datasheet (Detailed Version)

S5720-SI Datasheet (Detailed Version) S5720-SI Datasheet (Detailed Version) 1 Introduction Huawei S5700 series Ethernet switches (S5700 for short) are next-generation energy-saving Gigabit

Huawei S5700-EI Series Switches Product Brochure

Product Overview The S5700-EI series gigabit enterprise switches (S5700-EI) are next-generation energy-saving switches developed by Huawei to meet the demand for high-bandwidth access and

S5720-SI Series Standard Gigabit Ethernet Switches

S5720-SI Series Standard Gigabit Ethernet Switches The S5720-SI series switches are standard Layer 3 Gigabit Ethernet switches that provide flexible full gigabit access and cost-effective fixed GE ports

FAQ-Which Are the Default Passwords Used on S Series Switches

When you log in to a switch through web, your default user level is 0: visit level. For other default passwords, see Table 1 NOTE: By default, the console login password, BootROM password,

Huawei S5731-S Series Switches Datasheet

The CloudEngine S5731-S series switches are advanced gigabit switches featuring GE electrical/optical downlink ports and 10GE uplink ports, designed for various

Huawei L-1AP-S57 Price Datasheet S57 Series, Wireless Access

Check Huawei L-1AP-S57 product detail and price trend at [itprice](#) .

Huawei Gigabit S57xx series Access Switch Battle

Huawei Gigabit S57xx series Access Switch Battle Huawei S5700 series switches are developed based on high-performing hardware and the Huawei Versatile

Huawei CloudEngine S5731-H & S5731-S Switches Datasheet

Huawei CloudEngine S5731-S series switches are standard gigabit access switches that provide all-GE electrical ports and fixed 10GE uplink ports.

Chassis Overview

The switches are built on an integrated hardware platform, and their hardware system consists of the chassis, power module, fan module, extended cards, and Switch Control Unit (SCU).

CloudEngine S5731-S Series Switches

Gigabit access switches providing all-GE electrical ports. The CloudEngine S5731-S series offers a range of standard gigabit access switches, with all-GE

S5700 Series Switches Product Description (V200)

Huawei S5700 series Ethernet switches are next-generation energy-saving GE switches designed to provide high-bandwidth access and Ethernet multi-service aggregation.

Huawei S5700-EI Series Switches Product Brochure

The S5700-EI can function as an access device on a large-sized enterprise network or an aggregation device on a small-sized or medium-sized campus network. It supports link aggregation and dual

S5720-EI Series Enhanced Gigabit Switches

Huawei S5720-EI series switches provide flexible all-gigabit access and enhanced 10GE uplink port scalability. They are widely used as access/aggregation switches in enterprise campus networks or

License Control Items of N1 Software Packages

License Control Items of N1 Software Packages Table 5-1 N1 software packages supported by S5700 switches

S5720-SI Datasheet (Detailed Version)

As a model of SI series, S5720-SI is the standard Gigabit Ethernet switch. This Layer 3 switch delivers flexible gigabit ports for access and cost-effective gigabit and 10 gigabit upstream ports.

Huawei CloudEngine S5735-S Series Switches Datasheet

CloudEngine S5735-S switches can be used in various scenarios. For example, it can be used as an access or aggregation switch on a campus network or as an

Contact Us

For more information, pricing, or custom solutions, please contact us:

Website: <https://www.truhope.co.za>

Email: sales@truhope.co.za

Phone: +27 64 987 3021

Address: 22 Loop Street, Cape Town, 8001, South Africa

This document is for informational purposes only. Specifications subject to change without notice.

