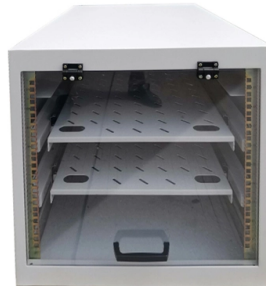


Cable tray shielding partition



Overview

Cable tray partition systems are essential components in cable management, designed to organize and separate various cables. • Assembled to Snap Track Tray with Patented Push Pin. • Rolled edge for maximum cable protection. (2) Patented Push Pins are. Eaton B-Line series Flextray divider, Steel, 6"divider, 6"divider Eaton is an intelligent power management company dedicated to improving the quality of life and protecting the environment for people everywhere. We are guided by our commitment to do business right, to operate sustainably and to. Systron CableShield conduit block shielding is used to reduce the electromagnetic fields of buried high-voltage cables. The shielding consists of corrosion-resistant elements that can be strung together and is. G-iron ® shielding channels is an innovative solution for the magnetic shielding of electrical cables and cable routing systems, designed to ensure efficiency, ease of installation and cost-effectiveness. It is ideal for installations where it is essential to mitigate the effects of magnetic fields. Learn our precise method for installing a low-impedance grounding system that uses cable tray cover, toothed washers and bonding jumpers to make a non-compliant tray system technically sound and fully protected. This project is located on the Saudi Aramco PCWBS A510 pipe rack (No.

Article Content

Compliance Requirements for Instrument Cable Trays

Installing instrument cable trays properly and in compliance with relevant standards is crucial to ensure safety, functionality, and durability. Below is a detailed guide

Types of Cable Tray Insulation You Should Know

Selecting the right insulation for cable trays is crucial for ensuring the safety, durability, and efficiency of electrical installations. Cable tray

Electrical equipment

The cable tray shields effectively reduce stray fields from single and multi-conductor cables. The cable tray shielding is used wherever the stray fields of cables must

G-iron® shielded cable trays: a new approach for cable trays

G-iron ® shielding channels is an innovative solution for the magnetic shielding of electrical cables and cable routing systems, designed to ensure efficiency, ease of installation and cost-effectiveness.

Cable Tray Cover: EMI Shielding solution

Solve the 650mm cable separation conflict (SAES-J-902) with a custom 360° EMI Shielding solution. Learn how grounding cable tray covers,

APC Shielding Partition Pass-through 600mm wide

Facilitates overhead cable management - Overhead cable troughs and partitions install toollessly on the roof of the enclosure eliminating the need for ceiling mounted or underfloor mounted cable trays.

50mm Premier Cable Tray Divider - PG

The 50mm Premier Cable Tray Divider is designed to provide effective segregation of power and data cables within tray systems. Also known as a cable

Free Cable Tray Fill Calculator | NEC & IEC Compliant Sizing | Shielden

Properly sizing your cable tray is critical for safety and compliance. Our free calculator helps you determine the correct tray size based on NEC and IEC standards.

Cable Tray Segregation and Clearance Rules

This document discusses cable segregation rules for different cable management systems. It provides guidelines for minimum separation distances between cable

Electrical equipment

Typical places of application are hospitals and research laboratories, but also industrial environments and office buildings. The shielding system consists of shielding elements that can be lined up in a

Cable Tray SHIB NAL

Cable trays are not raceways, but they are treated as a structural component of a facility's electrical system. Cable trays are a part of a planned cable management system to support, route, protect and

On the EMC Performance of Cable Trays

On the EMC Performance of Cable Trays How to improve EMC performances of cable installations. The major conclusion from the study is that

GUIDE CABLE TRAYS TECHNICAL

NEMA VE 1-2017 Specifies requirements for metal cable trays and associated fittings designed for use in accordance with the rules of Canadian Electrical Code, Part I and the National Electrical Code®

CABLES CONCEALED IN

partitions, i.e. walls and partitions of thickness of 100 mm or less. Clearly for such walls there are particular concerns with respect to damage to cables from fixings penetrating from the side of the

Core Principles for Electrical and Instrumentation Cable

2. Minimum Spacing and Segregation Spacing Standards: Electrical (power) and instrumentation (signal/control) cable trays should maintain a minimum vertical

Cable Tray Dividers

The Snap Track cable tray dividers & barrier cable systems are used to separate power & data cables within a Snap Track tray. Contact us!

6 IN DIVIDER | Eaton B-Line series Flextray divider

Eaton B-Line series Flextray divider, Steel, 6"divider, 6"divider. Eaton is an

6 IN DIVIDER | Eaton B-Line series Flextray divider

Eaton B-Line series Flextray divider, Steel, 6"divider, 6"divider. Eaton is an intelligent power management company dedicated to improving the quality of life

Cable Tray Spacing Standards for Installation and Safety

The Importance of Cable Tray Spacing in Electrical Infrastructure Cable tray spacing is a critical aspect of electrical infrastructure, influencing both

Cable Tray Dividers

Cable Tray, Divider Strip, 2" Cable Tray, Divider Strip, 2 Inch, COT30, For cable separation within a single tray.

Electrical Cable Tray Suppliers

At Shielden, we provide ladder cable trays, perforated trays, wire mesh trays, solid bottom trays, and channel trays to meet various installation requirements.

Cable Tray Design, Layout, and Overall Wiring Planning

Learn about effective Cable Tray Design and Layout for electrical systems. Our guide covers planning, material choice, safety, and maintenance.

Installing Cable Tray in Drywall Partitions Explained

Learn if you can install a cable tray within a drywall partition. This video covers cover and derating requirements. We'll also discuss additional considerat...

Cable Tray Technical Guide A practical guide to product selection and ...

Cable Tray Technical Guide A practical guide to product selection and installation This guide for engineers and installers has been developed by ABB as a practical reference regarding cable tray

Planning for EMC in cable tray systems

Following some best practices when installing cable tray can pay dividends in cabling system electromagnetic compatibility performance.

Step-by-Step Guide to Cable Tray Barrier Installation

Learn the essential steps for cable tray barrier installation, including pre-planning, securing supports, and ensuring compliance with industry

APC Shielding Partition Solid 750mm wide

Facilitates overhead cable management - Overhead cable troughs and partitions install toollessly on the roof of the enclosure eliminating the need for ceiling

Cable Tray Partition: Organize and Secure Cables Effectively

By implementing a cable tray partition, installations are kept orderly, which prevents tangled cables and makes maintenance easier. Partitions within the tray enable efficient use of

Locker Cable Tray Data Sheet

Key features Designed to protect power and equipment cables from the effects of elevated levels of radiant heat Reduces heat flux by up to 80% (see typical Heat Flux Reduction chart below) Can be

Contact Us

For more information, pricing, or custom solutions, please contact us:

Website: <https://www.truhope.co.za>

Email: sales@truhope.co.za

Phone: +27 64 987 3021

Address: 22 Loop Street, Cape Town, 8001, South Africa

This document is for informational purposes only. Specifications subject to change without notice.

