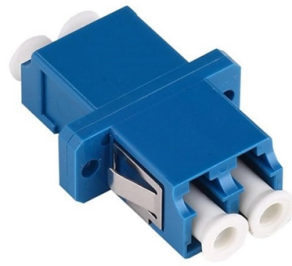


# Correctly Connecting the Electrical Distribution Box on the Construction Site



## Overview

Practice good wiring: secure grounding, neat cable management, proper insulation, and correct wire gauge and breaker size. Include protection devices like breakers, fuses, and surge protectors—each circuit should have its own protection. Comply with standards: Follow NEC, IEC . Choose the right box based on environment (indoor/outdoor), load capacity, and durability. Check for proper IP/NEMA ratings and material quality. Ensure safe placement: install in dry, accessible areas with good ventilation and at appropriate height (typically ~1. Whether it is residential buildings, commercial facilities or industrial sites, the. This article aims to provide a comprehensive overview of the essential guidelines for safe temporary electrical installations on construction sites, focusing on Best Practices, regulatory frameworks, and practical tips to enhance Workplace Safety. Understanding the regulatory frameworks governing. Strictly speaking, the word “Distribution Box (D-box)” can refer to two categories: electrical distribution boxes and septic tank distribution boxes. This article mainly talks about the first one. An electrical distribution box, also known as a power distribution box, panelboard, or consumer unit. In this video we are showing a complete Construction Site Electrical Distribution Panel setup. OSHA maintains a listing of the most frequently cited standards for specified 2-6-digit North American Industry Classification System (NAICS) codes.

## Article Content

Electrical safety on construction sites

56 Temporary electrical distribution systems may be needed on construction sites. Their temporary status does not mean that lower standards are acceptable as these systems are likely to be

Construction site electrical installations

Construction site electrical installations the role of the CDM regulations in ensuring electrical safety on construction sites.

Electrical

The references on this page provide information related to electrical in construction including OSHA's electrical construction regulations, hazard recognition, possible solutions and general resources.

Top Necessities For Proper Construction Site Power

Learn the top necessities for proper construction site power distribution, ensuring safety and compliance with NEC standards. Keep your job

How To Get Temporary Power for Your Construction

Best for: Construction projects that prioritize sustainability. Temporary Power Box A temporary power box, also known as a power spider box, is a

Construction Site Electrical Panel Setup | Distribution Board Wiring ...

In this video we are showing a complete Construction Site Electrical Distribution Panel setup. This includes MCCB, MCB, DB boxes, cable management, earthing and load distribution for...

How to Make Temporary Power Safer on Construction

Through a real-world project scenario, we explore how structured connectors, IP67 plug systems, and modular distribution cabinets create safer,

Power supply on the construction site

Power supply on construction sites is crucial to run all the equipment and tools needed to complete a project. However, distributing power correctly on a construction site can be challenging, especially

Requirements And Specifications For Installation Of

The metal box of the distribution box, the electrical installation board, and the metal base and casing of the electrical appliances in the box must be

Essential Guidelines for Safe Temporary Electrical

This article aims to provide a comprehensive overview of the essential guidelines for safe temporary electrical installations on construction sites, focusing on Best

Electricity in construction

Electrical Safety First: Best Practice Guides Avoiding danger from overhead power lines Avoiding danger from underground services General electrical information The Simple Precautions and

Electrician's Guide: Installing Distribution Boards

Explore a comprehensive guide on installing electrical distribution boards in building construction with safety and BI insights.

Electrical Installations at Construction Sites -

This includes ensuring all the vital spots of a construction site have electrical power to use the heavy-duty equipment. This means installing power cables, sockets,

Temporary Electrical Supply HSE Procedure For

Below procedure will help you to establish a safe standard for the installation of temporary and permanent electrical fixtures/appliances on project sites.

Electrical

Electrical hazards are addressed in specific standards for the construction industry. For additional information on general industry regulations, see the general industry regulations section. Visit the

Electrical Installations On Construction Sites

Practical guidance Electrical hazards are a major cause of death and serious injury on construction sites. This industry standard provides

Temporary electrical wiring for construction sites

Temporary for construction Construction work requires electrical power for many purposes. However, exposure to weather, frequent relocation, rough use and other conditions not normally encountered

Electrical safety on construction sites

Details It explains what to do to reduce the risk of accidents involving electricity. It includes advice on safe working practices for everyone who controls or influences the design, specification, selection,

Electrical Installations at Construction Sites

Acting as a central hub, switchboards direct electricity for various site needs, including the main power unit and distribution, enhancing overall efficiency. Basic safety measures, like circuit breakers, are

## Cautions and Requirements for Installation of

Distribution box is a low-voltage distribution device which assembles switchgear, measuring instruments, protective appliances and auxiliary equipment in a

## How to Install a Cable Distribution Box Safely and

The safe and correct installation of cable distribution boxes is crucial for the stable operation of electrical systems and the prevention of electrical

## Electrical safety on construction sites

Revised guidance aligned to the health and safety when handling electrical devices on construction sites.

## WORLD WIDE WEB JOURNAL Home

O'Reilly & Associates, Inc. 103A Morris St. Sebastopol, CA United States

## Construction site electrical enclosure

Find your construction site electrical enclosure easily amongst the 25 products from the leading brands (HLC, WALTHER WERKE, DIGITAL ELECTRIC, ...) on

## How to Install a Distribution Box—A Comprehensive

Whether you are an electrical contractor or a construction brigade, knowing how to properly and safely install distribution boxes is the basis of

## ENERGY METALBOX Assemblies for Construction

ENERGY METALBOX range consists of construction site distribution boards in metal cabinets with technopolymer socket-outlets. The steel sheet enclosure is

## Contact Us

For more information, pricing, or custom solutions, please contact us:

Website: <https://www.truhope.co.za>

Email: [sales@truhope.co.za](mailto:sales@truhope.co.za)

Phone: +27 64 987 3021

Address: 22 Loop Street, Cape Town, 8001, South Africa

This document is for informational purposes only. Specifications subject to change without notice.

