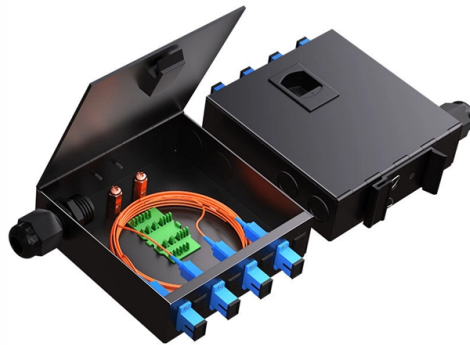


Dual network cable fiber optic socket panel



Overview

This 86-type panel combines a dual network cable interface, a cable TV interface, and an SC fiber optic socket, making it ideal for home or office network wiring. Its elegant white finish and simple design complement a variety of interior styles. The 2 port fiber wall outlet box is used as termination point to interconnect incoming cable with optical network unit device in FTTH, FTTB applications. It is typically installed inside the subscriber's home or building, close to the central distribution point provided by the broadband service. The 2 Ports Fiber Optic Socket Panel is a premium-quality solution designed for FTTH (Fiber to the Home) splicing and termination. Engineered for reliability and ease of use, these indoor optical faceplates provide secure fiber management and seamless connectivity for residential and commercial broadband deployments. And it's widely used in family and work places.

Article Content

Fiber Optic Wall Plate Outlets Box Optic Socket

High-performance Fiber Optic Wall Sockets and FTTH Outlets for residential and commercial networks. Browse durable indoor optical faceplates, termination

Fiber Optic 2 Port Socket Panel Mini Terminal Box

SP-1602-2G Fiber termination boxes wall mount outlets is able to hold up to 2 subscribers. It is used as a termination point for the drop cable to connect with

Cable Monkey | The UK's leading supplier of networking

Network Testers Installation Essentials RJ45 Plugs & Boots Training Courses All Day Training Courses Half Day Training Courses Clearance Zone Fibre

Fiber Wall Outlets

CommScopes fiber wall outlets provide fiber connectivity to your enterprise network

Fiber Wall Socket Outlets, 2 Fiber Termination Box

This wall-mount fiber optic outlet box provides end-users with a fiber cable termination solution in FTTH, FTTO, and FTTB networks. Our fiber wall socket

XMSJSIY LC to LC Fiber Optic Panel Mount Adapter

About this item LC fiber optic panel mount adapter Connects two LC optical cables together, extends LC optical cables, and expands LC optical ports to ensure

2 Port Indoor Fiber Optic Wall Outlet Box, 2 Cores Splice

This 2 port indoor fiber wall outlet is a mini termination box especially suitable to link drop cable to ONT (optical network terminal) devices in the apartment or small

Fiber Optic Hardware | Fiber Panels, Housings, Racks, and ...

Corning has a wide variety of hardware solutions to choose from to fit your cabling needs. Choose from racks, panels, modules, splice trays, ethernet fiber switches and other structured cabling components.

QIANRENON LC Fiber Panel Mount Adapter LC Fiber Optic Connector Socket ...

Suitable for concealed installation in equipment cabinet, equipment panel, wall, desktop, floor plug. □Application□LC Fiber Optic Panel Mount connector module. Widely used in fiber optic

Fiber Terminal Box 2 Cores SC Wall Outlet Faceplate

This fiber terminal box (FTB) offers 4 cable ports, provides effectively fiber management for FTTH system at the customer end.

GELRHONR FTTH Fiber Panel Box Enclosure,2 Core

The FTTH fiber panel box provides superior protection as the main function of the panel is to fix the module, protect the cable at the information outlet, and play a

Fiber Wall Socket /2 Ports FTTH Fiber Optic Terminal

*** Note: Not Included any Fiber Optic Coupler (Fiber Optic Coupler can find in our store as well) Fiber Wall Socket /2 Ports FTTH Fiber Optic Terminal Box

FTTH Wall Outlet Fiber Faceplate Wall Mounted SC LC

This FTTH Fiber Faceplate SC LC Optical Socket Panel SP01B is designed to splicing and termination between indoor SC LC fiber optic cable and pigtails.

2-Port FTTH Optical Fiber Terminal Box 2-Channel

Buy 2-Port FTTH Optical Fiber Terminal Box 2-Channel Socket 2-Core Splitter 86x86mm FTTH Fiber Panel Fiber Optic Terminal Dual SC Junction Box online

Wall Face Plate Dual Fiber Optical SC Cable Connector

FTTH Fiber Socket is specially designed for FTTH (Fiber to The Home) for indoor application.

How to Customize a Fiber Wall Outlet Socket for an ISP

ISPs often utilize fiber optic technology to deliver reliable, high-bandwidth connections directly to the customer. Customizing a fiber wall outlet

Dual-Layer Fiber Wall Outlet Box with Protective Hood, 2 SC Ports ...

Description The 2 port fiber wall outlet box is used as termination point to interconnect incoming cable with optical network unit device in FTTH, FTTB applications. It is typically installed inside the

2 Ports Fiber Optic Socket Panel

Engineered for seamless integration between indoor fiber optic cables and pigtails, this socket panel is compatible with SC, LC, and FC connectors. It is ideal for

2 Port Mini FTTH Box Fiber Face Plate for Fiber

The 2 Port Mini FTTH Box Fiber Face Plate for Fiber Sockets Outlet is a high-quality face plate designed for use in fiber optic network installations. It is a compact and

Understanding Fibre Optic Cables & Types with Network ...

This video provides a real world overview of using Fibre Optic cables in the data centres for connectivity between network switches and patch panels.00:09 Fi...

Cables, Adapters, & Docking Stations: USB4, USB-C,

Cable Matters provides a large selection of innovative cables and accessories, we also educate consumers on the best product offerings. USB4, USB C,

Fiber Optic Socket Wall Outlet Faceplate 3C-FTTH

Fiber Optic Socket Wall Outlet Faceplate Fiber Access Termination Box 3C-FTTH-MTM-01 fiber termination box provides a mini density wall-mounted solution for

Dual-Layer Fiber Wall Outlet Box with Protective Hood, 2 SC Ports ...

It is of high quality plastics which provides strong protection for drop cable and pigtail, dual-layer structure allows for easy optical cable management and reasonable fiber bend radius, fiber optic

Fiber Optic Wall Plate Outlets Box Optic Socket

Streamline your network termination with our premium Fiber Optic Wall Sockets

XMSJSIY LC to LC Fiber Optic Wall Plate Duplex LC Coupler Patch Panel ...

About this item LC to LC Fiber Optic Wall Plate jack adapter is equipped with a ceramic sleeve protective cap, which connects two LC fiber cables or extends the fiber connection in the network

Type 86 Dual Network & Fiber Optic Socket Panel

This 86-type panel combines a dual network cable interface, a cable TV interface, and an SC fiber optic socket, making it ideal for home or office network wiring. Its elegant white finish and simple design

Contact Us

For more information, pricing, or custom solutions, please contact us:

Website: <https://www.truhope.co.za>

Email: sales@truhope.co.za

Phone: +27 64 987 3021

Address: 22 Loop Street, Cape Town, 8001, South Africa

This document is for informational purposes only. Specifications subject to change without notice.

