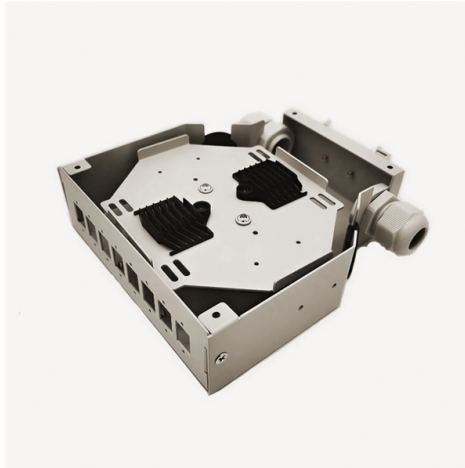


Explosion-proof distribution box with 6 circuits



Overview

A series of control and distribution panels made from aluminum. Ex d and Ex tb certified for installation in explosion-hazardous areas. Suitable for use in gas group IIB+H 2 environments. Customizable configuration of operators, cable entry quantities and cable gland types. ROSE supplies flameproof enclosures in various sizes and types for use in various gas groups and service-temperature ranges. The enclosure experts from Porta Westfalica thus provide industry with a broad range of solutions for the safe and reliable encapsulation of electrical equipment. Whether as Crouse-Hinds series AGP17 ATEX and IECEx explosion-protected distribution boards and control assembly are designed for MCB distribution of lighting circuits, heating circuits, socket distribution and control circuits in Zone 1, 2, 21 and 22 hazardous areas. Manufacture custom made Local Control Stations & Distribution Boxes, local control panel boards and stations, explosion protected control units, distribution. Explosion-proof circuit breaker (MCB) box Manufacturers ● It is energy-saving and environmental protection which the power consumption is only 19% of the same brightness of incandescent lamp. Equipped with a specialized hinge structure which can prevent damage to the flameproof joints when opening and closing the box and greatly prolongs the service life.

Article Content

FBCZX Explosion Proof Power Distribution Box 380V IP66 6 Sockets ...

Product Introduction: This industrial-grade low-voltage power supply box, model FBCZX, is designed for reliable electrical distribution in demanding environments. Manufactured by Jiangsu Sanniu, it

Lithuania Explosion Proof Electrical Distribution Box Manufacturer ...

Sell Lithuania Explosion Proof Electrical Distribution Box Manufacturer in bulk to verified buyers and importers. Connect with businesses actively looking to buy wholesale Lithuania Explosion Proof

Ex d Enclosure Series

The Ex d IJB series of enclosures is suitable for use in Gas Group IIB+H2 for the protection of electrical and control-system solutions, such as energy distribution, monitoring of processes and the complex

LarsonElectronics

Larson Electronics Releases 9000W Metal Halide Light Tower, 6 Lamps, Remote Ballast Box, 10"-35" - 4/1/2024 Explosion Proof Lighting Portable Hazardous Location Lighting Explosion Proof Network

HRMD91 Explosion proof Distribution Box (Ex d IIB+H2)

The boxes can be combined and installed freely to save space and meet the requirements of various distribution systems. Client requirements can be incorporated upon request.

Lithuanian Explosion Proof Distribution Box Factory

Buy premium Lithuanian Explosion Proof Distribution Box Factory in bulk from verified wholesale suppliers and manufacturers. Best prices, bulk discounts, trusted deals at go4WorldBusiness .

DZMCT Customized 304 Stainless Steel Explosion-proof Button Box,

DZMCT Customized 304 Stainless Steel Explosion-proof Button Box, Used for Power Distribution Equipment, Explosion-proof JXF Type No reviews yet Henan Dongzheng Measurement And Control

Warom HRMD91-200A-6L-ExdIICT6 Explosion Proof Industrial Power ...

This is a 200-Amp Explosion-Proof Distribution Panel with 6 output circuits, specifically certified for use in environments with a wide range of hazardous gases and vapors, and with a very high level of

1,000+ Angolan Explosion Proof Distribution Box ...

Today's top 1,000+ Angolan Explosion Proof Distribution Box Manufacturers jobs in United States. Leverage your professional network, and get hired. New Angolan Explosion Proof Distribution Box ...

Explosion Proof Distribution Box & Electrical Enclosures

Durable Hexlon Explosion Proof Distribution Boxes and Electrical Enclosures, IECEx and ATEX certified for Zone 1 and Zone 2.

Discover Europe's digital cultural heritage | Europeana

Hier sollte eine Beschreibung angezeigt werden, diese Seite lässt dies jedoch nicht zu.

Terminal and Junction Boxes (Ex d) | Explosion Protection

Pepperl+Fuchs provides a specialized portfolio of Ex d (flameproof) and Ex tb (dust protection by enclosure) certified terminal boxes and junction boxes engineered for reliable use in explosion

IP66 Explosion Proof Distribution Boxes for Hazardous Areas

Shop high-quality IP66 explosion proof distribution boxes for safe and reliable electrical installations in hazardous areas. Find durable, customizable solutions now.

croatian-explosion-proof-power-distribution-box-manufacturer

20 Companies and suppliers for croatian-explosion-proof-power-distribution-box-manufacturer Find wholesalers and contact them directly Leading B2B marketplace Find companies now!

price-of-explosion-proof-lighting-distribution-boxes-from-columbia ...

All suppliers for price-of-explosion-proof-lighting-distribution-boxes-from-columbia-manufacturers Manufacturer/Producer Find wholesalers and contact them directly B2B marketplace Find

Ex Isolation Switch/Safety Switch/Circuit Breaker Manufacturers

The main products have obtained ATEX EU explosion-proof certification and IECEx international explosion-proof certification. CZ has agents or offices in 28 countries and regions, and welcomes

Control and Distribution Panels | Ex d | EJB Series

The enclosures are certified Ex d IIB+H2 and Ex tb as well as "explosion-proof". They are available in many sizes, a wide range of operating elements and monitoring functions can be integrated. They

AGP17 ATEX and IECEx Explosion-protected Distribution Boards

Crouse-Hinds series AGP17 ATEX and IECEx explosion-protected distribution boards and control assembly are designed for MCB distribution of lighting circuits, heating circuits, socket distribution

Ex Local Control Stations & Distribution Boxes

Atex control stations, explosion protected control units and distribution boxes made stainless steel maritime grade AISI 316L or AISI 304L. Atex Delvalle provides a custom build facility for Hazardous

Contact Us

For more information, pricing, or custom solutions, please contact us:

Website: <https://www.truhope.co.za>

Email: sales@truhope.co.za

Phone: +27 64 987 3021

Address: 22 Loop Street, Cape Town, 8001, South Africa

This document is for informational purposes only. Specifications subject to change without notice.

