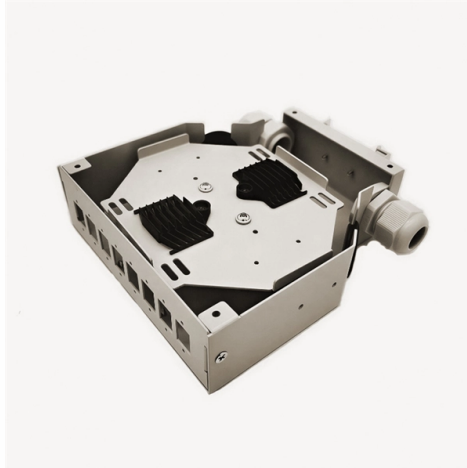


How to weld cable tray iron supports



Overview

This article provides an in-depth look into the process of welding metal supports for utility cables. It explores advanced welding techniques, best practices, the importance of safety, and how emerging data analytics and business intelligence can improve quality and efficiency. Cable tray welding enhances the durability of.

According to an embodiment of the present invention, a method to weld a cable tray support, which is capable of improving convenience of welding by forming a bonding surface on the lower part, comprises: a welding position selecting step of selecting a welding position of a cable tray support; a. Tools and equipment needed for cable tray support installation should be in good condition and must be checked by Supervisor / Safety Engineer prior to use in the construction area. The threaded rod GT-10 is attached to the beam bracket with nuts MU M10. See product:.

When developing our cable support OBO can offer reliable solutions for systems, three attributes are at the routing and fastening cables securely core of what we do: efficiency, resil- for each of these installation challeng-ience and safety. es in the industrial environment.

Article Content

CABLE TRAY AND ELECTRICAL EQUIPMENT

Tools and equipment needed for cable tray support installation should be in good condition and must be checked by Supervisor / Safety

How to Install Cable Tray: A Comprehensive Guide to Different Cable ...

Welcome to our step-by-step guide on installing cable trays! In this video, we'll explore the different types of cable trays available and provide detailed instructions for their installation.

Guide to cable support systems

The load capacity of the cable trays according to the support width can be read off in the diagram using load curves - here, shown as an example for a cable tray with the tray widths 100 to 600 mm.

Cable Tray Installation Procedure | PDF | Metal

Method Statement for Cable Tray Installation - Free download as Word Doc (.doc), PDF File (.pdf), Text File (.txt) or read online for free. This document outlines the

Cable Tray Support: Rod vs. Angle Steel

Learn about the different types of cable tray support, including rod supports and angle steel supports, and how to choose the right one for your

Full text of "NEW"

Full text of "NEW" See other formats Word . the, > < br to of and a : " in you that i it he is was for - with) on (? his as this ; be at but not have had from will are they -- ! all by if him one your

Cable Tray Erection Method Statement

6. Erection of trays and supports at site locations shall be using necessary platforms, Tower ladders, scaffolding and other safety measures. 7. Never use

CABLE TRAY AND ELECTRICAL EQUIPMENT

Self standing support for cable tray shall be made of steel channel vertically nstalled and supported with concrete foundation, anchor bolt grouting,

INSTALLATION GUIDE

Where metal supports for metal cable trays are bolted to the tray and are in good electrical contact with the grounded structural metal frame of a building, the tray shall be deemed to be bonded to ground.

Bharat Heavy Electricals Limited

3.1 Bidder shall quote for cable tray support system (welded) in accordance with various sections of this specification. The system shall be complete in all aspects, for satisfactory operation, in accordance

A Guide to Installing and Supporting Electrical Cable

A professional guide to installing electrical cable tray systems per NEC Article 392. Covers support, securing cables, and fill calculations.

Cable Support Systems

Find out how you can install cable trays faster and easier with our innovative patented product Hermi® Fast Joint. In the video, you will be able to see a co...

How To Install Cable Tray Ceiling Supports

There are several threaded rod hanging options that can save you time and money. Also learn about your options for wire support systems.

Cable tray support and its welding method

As described above, the cable tray support and the welding method according to an embodiment of the present invention can weld the welding area by the operator alone while the joint...

Unistrut Cable Tray Support Structures

Cable Tray systems are often used to support electric power, signal, control, instrumentation, and communication cables used for power distribution and

Cable Tray Support Weld Design Analysis | PDF

The document discusses the weld design for connections of different sized cable trays. It provides maximum and minimum force calculations for beams of various

A Guide to Installing and Supporting Electrical Cable

This guide covers the critical steps, from selecting the right electrical cable tray and performing accurate cable fill calculations to managing a safe cable pull through

Technical Specification for Cable tray installation and cable laying work

Technical Specification for Cable tray installation and cable laying work Scope :- This specification covers the following major activities; Fabrication and installation of Mild Steel (MS) support structure

B-Line series Cable Tray Design Considerations

As an industry leader in cable tray, Eaton offers one of the widest ranges of cable management solutions available in the market today with its B-Line series portfolio. With unmatched quality and service, we

Utility Cable Support Welding Guide

This article provides an in-depth look into the process of welding metal supports for utility cables. It explores advanced welding techniques, best practices, the importance of safety, and how emerging

Best Practice Guide to Cable Ladder and Cable Tray Systems

This publication is intended as a practical guide for the proper and safe* installation of cable ladder systems, cable tray systems, channel support systems and associated supports.

Mastering Cable Tray Welding: Tips for Seamless Installations

Cable tray welding is a critical process for assembling secure and durable cable tray systems. Whether for industrial or commercial applications, the steps and techniques involved ensure safety, stability,

Best practice guide to cable ladder and cable tray

Cable ladder and cable tray systems The following recommendations are intended to be a practical guide to ensure the safe and

Microsoft Word

Cable Trays Support, Fixing Hardware & Accessories shall be supplied as per this drawings. All finished galvanized MS structural members for Cable Tray Support, Fixing Hardware & Accessories shall be

How to attach cable ladder, cable tray, wire mesh tray or lighting ...

How to attach cable ladder, cable tray, wire mesh tray or lighting support rail to a beam? Meka 630 subscribers [Subscribe](#)

Cable Tray Technical Guide A practical guide to product selection and ...

SOLID-BOTTOM CABLE TRAY Providing additional cable protection, solid-bottom cable tray is sometimes preferred to support and protect numerous small instrumentation and control cables.

Contact Us

For more information, pricing, or custom solutions, please contact us:

Website: <https://www.truhope.co.za>

Email: sales@truhope.co.za

Phone: +27 64 987 3021

Address: 22 Loop Street, Cape Town, 8001, South Africa

This document is for informational purposes only. Specifications subject to change without notice.

