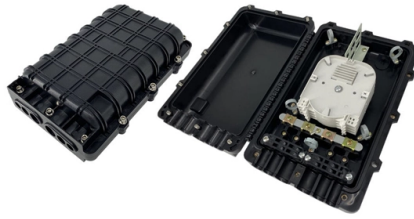


# Huijue 100g Optical Module Single Mode Dual Core



## Overview

02311KNU - Genuine Huawei QSFP28-100G-LR4 100GBase-LR4, Optical Transceiver, QSFP28, 100G, Single-mode Module (1310nm, 10km, LC) Basic Information  
Transmitter Optical Characteristics Receiver Optical Characteristics This 02311KNU is 100% genuine Huawei product. Optical modules are optoelectronic devices that perform photoelectric and electro-optic conversions. The design is compliant to 100GbASE-LR4 of the IEEE 802. The module converts 4 inputs. Our company is a high-tech enterprise focusing on the research and development, production, sales and service of data centre, integrated cabling, network transmission, data communication and microwave RF products, etc. It is similar to the 100G QSFP28 CWDM4 optical module.

## Article Content

The Difference Between Single/Dual Fiber and

Single-mode optical modules are best for long distances and fast speeds. They use a thin fiber core. Multi-mode modules are good for short

WP-100G Coherent

The innovative 100G coherent solutions enable transport of 100G data rate capacity over a single wavelength across long distances with higher optical performance than 10G solutions. The coherent

SFP Module Types: Single-Mode vs Multimode SFP

Single-mode and multimode SFP are two SFP module types that will work on different fiber types. This post focuses on the color coating, laser transmitter wavelength, transmission

Business In Tanzania | \* Commando SFP-SM-1G for TZS | Facebook

Single-Mode vs Multi-Mode Fiber Optic & SFP Modules – Know the Difference

☐☐Choosing the right fiber optic cable and SFP module is critical for building reliable and scalable networks.

Huawei QSFP-100G-FR1 02314BDE 100GBase-FR1Optical

This module is specifically designed to support 100 Gigabit Ethernet (GbE) data rates over single mode fiber, making it ideal for long haul and high speed data transmission applications.

100G QSFP28 Transceiver Selection Tutorial For Beginner's

A: QSFP-100G-ER4L-S QSFP28 transceiver module is designed for use in 100GBASE Ethernet throughput up to 40km over single mode LC fiber cable. While the QSFP-100/112G-ER4

The Knowledge 100G Optical Transceivers You Should

How should the correct 100G optical transceiver module be selected? This blog will introduce 100G optical transceiver related knowledge, hope to help

100G Optical Module Selection Guide: Advantages and Types of

Explore the QSFP28 100G optical module, a vital component for high-speed network connections. Discover its unique features, advantages, and various types to meet diverse

QSFP28-100G-SM1310100G | 100G Single-Mode Dual-Core Optical Module ...

Buy Haile QSFP28-100G-SM1310100G 100G single-mode dual-core optical module. Supports 1310nm wavelength, long-distance 100 Gigabit Ethernet, compatible with major network brands for high

Your Sustainability Transformation Partner | Fujitsu Global

Our purpose: Make the world more sustainable by building trust in society through innovation.

100G 60km ER4+ QSFP28 Transceiver 100GBASE-ER4+ 1310nm

Item Length 30M Model Number QSFP28-100G-ER4+ 100Gb 60km ER4+ QSFP28 Transceiver 1310nm

Exploring 100G Single Mode QSFP28 Transceiver Types

Explore 100G single mode QSFP28 module types by distance, cost, and use case to select the best fit for data center, metro, or long-haul networks.

100G Single-Fiber Optical Module: New Choice for High-Bandwidth ...

100G single-fiber optical modules, with their core advantage of enabling bidirectional transmission over a single fiber, are becoming a key device for conserving fiber resources and

Next-Generation Connectivity: The Rise of 800G OSFP 2\*FR4 Optical ...

At its core, an 800G OSFP 2\*FR4 transceiver is a hot-pluggable optical module designed for 800 Gigabit Ethernet links. Unlike traditional single-channel modules, the "2\*FR4" designation

100G Single-mode Dual Core 1310nm 10km 1 with DDM Compatible

100G Single-mode Dual Core 1310nm 10km 1 with DDM Compatible Huawei H3C Ruijie ZTE Cisco

QSFP28-100G-LR1 Optical Transceiver Single-Mode

Explore the QSFP-10010-LR1 a 100G LR1 single-mode transceiver for 10Km. Cisco compatible - buy now for high-speed networking!

How to Choose the Right 100G Dual Rate Optical Module for Your

Choose the right 100g dual rate module by matching data rates, compatibility, and future-proofing your network for seamless upgrades in 2025.

The Key Differences Between 1-core, 2-core, Single Mode, and Multi-mode ...

For Shorter Distances or LANs: Multi-mode (MM) modules work best here—choose 1-core MM for basic short-distance networks, and 2-core MM if you need extra bandwidth or fault

Overview of 100G Optical Modules and Modulation

Explores 100G Optical Modules types and modulation techniques, focusing on PAM4 and coherent optics to improve performance and bandwidth.

QSFP-100G-CLR4 Module 100G QSFP28 price and

For fiber optic links with forward error correction (FEC), 100G QSFP28 CWDM4 optical modules and 100G QSFP28 CLR4 optical modules can be used together.

100g Qsfp28 Single Mode Dulex LC 1310nm 10km/20km Optical Fiber ...

The module converts 4 inputs channels (ch) of 25.78 Gbps to 27.95Gbps electrical data to 4 lanes optical signals, and multiplexes them into a single channel for 100Gb/s optical transmission.

Huawei QSFP28-100G-LR4 Optical Module Datasheet

The transmitting end of an optical module converts electrical signals into optical signals, while the receiving end converts optical signals back into electrical signals. Optical modules are classified by

1.25G 2.5G 10G 40G 100G Dual Mode Huawei SFP

High quality 1.25G 2.5G 10G 40G 100G Dual Mode Huawei SFP Module from China, China's leading product market 1.25G SFP Transceiver product market,

100G Optical Module: How to Choose Between SR4,

3.100G BiDi SR Asterfusion QSFP28-100G-SR BiDi 850nm 910nm 100m Duplex LC MMF Transmission Distance: Up to 100m Transmission Mode:

Understanding 100G Single Fiber QSFP28 Module for

100G single fiber QSFP28 modules enable fast, cost-effective network upgrades using one fiber strand, ideal for scalable modern data centers.

40G/100G single -mode single -core optical fiber module application

As data center and telecommunications networks continue to demand higher speeds and larger capacities, the need for high-speed optical fiber modules has become increasingly important.

100G LR4 Single-Mode Optical Module

QSFP28 transceiver that supports 100G connections up to 10 km using single-mode fiber with a duplex LC UPC connector.

1pc 100Gb QSFP28 Singlemode Module 100GBASE-LR4 1310nm

1pc 100Gb QSFP28 Singlemode Module 100GBASE-LR4 1310nm 10km DOM Duplex LC SMF Optical Transceiver Compatible with Arista/Brocade/Dell SFP-100G-LR4 ect.

100G QSFP28 Transceiver Modules | Optical

The 100G QSFP28 module solution provides high-performance 100GbE connectivity for data centres, enterprise core & distribution layers, computing networks and 02311KNU

And the Huawei QSFP28-100G-LR4 100GBase-LR4, Optical Transceiver, QSFP28, 100G, Single-mode Module (1310nm, 10km, LC) is factory new with original

## Contact Us

For more information, pricing, or custom solutions, please contact us:

Website: <https://www.truhope.co.za>

Email: [sales@truhope.co.za](mailto:sales@truhope.co.za)

Phone: +27 64 987 3021

Address: 22 Loop Street, Cape Town, 8001, South Africa

This document is for informational purposes only. Specifications subject to change without notice.

