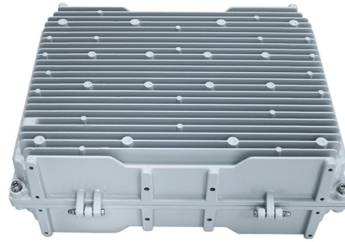


Nicaragua Laser Diode Test Socket



Overview

Laser Diode Test Socket 3-pins LD Socket TO-18 (5. Small size, easy to install and use 1. BOSA, TOSA, ROSA coaxial. These laser diode sockets are ideal for OEM-type implementations and are compatible with our selection of Ø3. Our large. Our headquarters are in Tokyo, with multiple manufacturing facilities across Japan. We perform a full range of processes in-house, including injection molding, turning, assembly, and inspection, leveraging our broad knowledge and experience to solve customer challenges. We offer a variety of. Another fundamental method is L-I-V characterization, where the optical output power (L) and voltage (V) are measured against the drive current (I) to determine key parameters like threshold current and slope efficiency. Mouser offers inventory, pricing, & datasheets for Laser Diode Socket IC & Component Sockets. Market Forecast By Wavelength (Infrared Laser Diodes, Red Laser Diodes, Blue Laser Diodes, Blue Violet Laser Diodes, Green Laser Diodes, Ultraviolet Laser Diodes), By Technology (Double Hetero Structure Laser Diodes, Quantum Well Laser Diodes, Quantum Cascade Laser Diodes, Distributed Feedback. Laser Diode Test Socket 3-pins LD Socket TO-18 (5.

Article Content

Laser Diode Socket

Laser Diode Socket is socket developed for the packaging and testing of laser diodes, TOSA, BOSA and ROSA. It is an essential tool for manufacturers of

TO56 8pin 2.6mm 3.56mm 3.65mm pitch Crystal

Home / Aging test socket / Laser diode socket / TO56 8pin 2.6mm 3.56mm 3.65mm pitch Crystal transistor test socket laser diode socket TO56 8pin 2.6mm 3.56mm

5PIN TO56 Laser Diode Test Burn-in Socket LD Socket

Find many great new & used options and get the best deals for 5PIN TO56 Laser Diode Test Burn-in Socket LD Socket at the best online prices at eBay! Free

66152 Lamp Socket Adapter

The 66152 lamp socket adapter is for use with the model 6291 200 W Hg (Xe) Arc Lamp and suitable Oriel Research Arc Lamp Housing.

Laser Diode Socket IC & Component Sockets - Mouser

Mouser offers inventory, pricing, & datasheets for Laser Diode Socket IC & Component Sockets.

Test Socket and Fixture Solutions for EEL and VCSEL

Conventional test sockets that contact only the bottom side of a DUT won't work here. This custom burn-in fixture for EEL Diodes seats four

Laserland Laser Diode Socket

Laser Diode Socket Test Base 3pin for 5.6mm 5pcs \$22.98 As low as: \$18.95 Add to Cart

Roithner Lasertechnik

SOCKETS FOR LASER DIODES Teflon Sockets for 5.6 mm and 9.0 mm laser diodes, 3-pins or 4-pins teflon body, gold plated contacts, superior quality

Nicaragua Laser Diode Market (2025-2031) | Size & Outlook Growth

6Wresearch actively monitors the Nicaragua Laser Diode Market and publishes its comprehensive annual report, highlighting emerging trends, growth drivers, revenue analysis, and forecast outlook.

Burn-In and Test Sockets On Loranger International Corp.

Sockets Selected Based on Lead Count, Pitch, and JEDEC Reference.

tunable-diode-lasers Distributors near Nicaragua | ...

Advanced Test Equipment Rentals (ATEC) supplies complete test solutions for EMC, electrical, power quality, environmental and similar testing applications for the defense, aerospace, medical and

Laser Diode Tools and Accessories

Thorlabs offers a versatile range of accessories for convenient integration of laser diodes into functional systems. These laser diode sockets are ideal for OEM

Laser Diode Sockets | JC CHERRY INC.

We offer a variety of sockets compatible with laser diode packages such as TO-18, TO-46, TO-52, and TO-72. We also provide cable-equipped sockets designed for FCD.

Laser Diode Testing – performance, reliability,

The ideal laser diode testing system would assess all possibly relevant characteristics with high accuracy and perfect reliability within a short time, and

Laser Diode Socket, 3-Pin TO-CAN Laser Socket

A 3-Pin TO-CAN Laser Socket is a specialized socket designed to accommodate and connect 3-pin TO-CAN laser diodes. It provides a convenient and secure

Laser Diode Socket

Laser diode socket 12 pin laser diode test socket ROSA 12pins LD detection
Temperature-sensitive Photosensitive test socket \$ 47.80 – \$ 69.80

Laser Diode Socket Test Base 3pin for 3.8mm

LD Laser Diode Test Base 3 pin for 3.8mm designed for laser diode testing and projects. Solves soldering and wiring issues for many projects. Laser diode not

6 pin laser diode test socket ROSA 6pins LD detection

Quantity: 1pcs Specifications: 6pin Note: 6pin socket has a lot of size specifications, accept customization (please send us dimensional drawings), thank you!

3M™ Textool™ Laser Diode Sockets | 3M United States

Compact miniature socket size for maximum board density Accomodates most any TO package format with pin circle options of .079" (2.0 mm) or .100" (2.54 mm),

FSHH round 8pin laser diode test socket (electrode

socket Clear Add to cart SKU: N/A Category: Laser diode socket Description Additional information Reviews (0)

Laser Diode Testing for Burn-in & Reliability Testing

Custom ATE laser diode burn-in, reliability, and life testing system for laser diode packages — with flexible DUT fixtures for fast changeovers. Ensure compliance

3M™ Textool™ Laser Diode Sockets | 3M United States

Accommodates most any TO package format with pin circle options of .079" (2.0 mm) or .100" (2.54 mm), including popular laser diode devices 3 and 4 lead options

Laser diode reliability test system – short pulse

This laser diode reliability test system has been specially designed for the qualification and test of fiber-coupled devices with maximum of internal and

Laser Diode Test Socket 3-pins LD Socket TO-18 (5.6mm)

Three-legged laser diode test, the length of pin is universal. 2. Low resistance, not easy to oxidize, long service life. 3. Small size, easy to install and use. 1. Laser

Laser Diode Socket – Laserland

5.6mm Laser Diode LD Socket Base for Plastic Package Laser Diode 1.99 Add to cart
Details Quick View Out of stock

Laser Diode Tools and Accessories

These laser diode sockets are ideal for OEM-type implementations and are compatible with our selection of Ø3.8 mm, Ø5.6 mm, Ø9 mm, and TO-5 laser

1pcs 7PIN TO46 Photodiode Test Aging Socket – LaserSE Lasers Life ...

4. Pin distribution: A = 3-4-0 structure parameter— Applicable package shape Laser Diode Application Burn-in test / product function test;

Laser diode connecting socket

Connecting socket for laser diodes. Advantages: Easily removable No solder heat on the laser diode Perfect for temporary tests No broken or bent pins

Contact Us

For more information, pricing, or custom solutions, please contact us:

Website: <https://www.truhope.co.za>

Email: sales@truhope.co.za

Phone: +27 64 987 3021

Address: 22 Loop Street, Cape Town, 8001, South Africa

This document is for informational purposes only. Specifications subject to change without notice.

