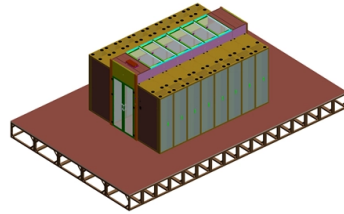


# Nordic span bridge



## Overview

The Øresund Bridge, an architectural and engineering marvel, stands as a testament to human ingenuity and the close ties between Denmark and Sweden. It is the second longest bridge in Europe and combines both roadway and railway in a single structure, consisting of international European route E20. Gen. Christopher Dennis/US Army) TAMPA, Fla. It crosses the Øresund Strait, or the Sound. The link consists of the Øresund tunnel between Amager (near Kastrup south of Copenhagen) and the artificial island Peberholm (south of. The Denmark-Sweden bridge-tunnel, a long bridge that spans over 16 kilometres from the Swedish coastline to the artificial island of Peberholm in the middle of the strait, is Europe's longest motorway and railroad bridge-tunnel.



## Article Content

The Öresund Link | NCC

The bridge starts in Sweden and the tunnel in Denmark. NCC led the Øresund Tunnel Contractors, the international consortium that built the 3.7-kilometer-long

Nordic Structures | nordic.ca | Engineered Wood

Wooden bridges: culture and tradition Timber bridges are culturally significant structures that have a long tradition, with many pre-1950s bridges still in use

Microsoft Word

Additionally two booklets presenting Nordic timber bridges built during the projects were published. Some of the results had contribution to the ongoing work with Eurocodes. The main result, however,

Project Partnership

Project Partnership Nordic Bridge brings together a consortium of 24 partners from Norway, Iceland, Finland, and Ireland. The partnership spans the full quadruple helix—academia, municipalities and

NORTHCOM standing up "Nordic Bridge" to boost US coordination in

Cold weather training in Alaska in 2021, featuring the 50-year-old ski design about to be replaced.. (Sgt. Christopher Dennis/US Army) TAMPA, Fla. — US Northern Command is standing up

Span by Span Casting method of Bridge Construction:

Reading time: 1 minute Span by Span Casting method of Bridge Construction: Span by span is a relatively new construction technique historically associated with

Nordic Crane deploys Enerpac jack-up for Danish bridge work

The new bridge features a moveable span or flap that can open for ship traffic, allowing tall ships through. The steel flap was built off-site and transported by barge, along with the Enerpac JS

The Nordic Timber Bridge Project and the Norwegian ...

The Nordic Timber Bridge Project has promoted the interest in constructing timber bridges and to regard wood as an alternative to steel and concrete in the Nordic countries. This paper reports

The Øresund Bridge - linking Scandinavia to the

The 490 metre long main span of the high bridge crosses the Flinte navigational channel, which is used by approximately 10 per cent of the vessels passing

## Øresund Bridge: Icon of Nordic Innovation

The Øresund Bridge, an architectural and engineering marvel, stands as a testament to human ingenuity and the close ties between Denmark and Sweden. This iconic structure, part bridge,

### Øresund Bridge

ØLC (Øresund Link Consultants) instead placed highway and rail in the same plane on a concrete bridge. Both groups advocated an inclined cable-stayed bridge

### Long-span bridges

Long-span bridges Aas-Jakobsen started specialising in long-span bridges in the 1980s when designing concrete balanced cantilever bridges with increasingly

Our assignment: Öresund Bridge | skanska.se

The high-level bridge comprises a diagonal-cable bridge, the longest in the world, with both railway and motorway. The two bridge towers are 203.5 meters high,

### Timber bridges in Scandinavia

Road bridge over Klintforsån 1999, photo P-A Fjellström Glulam stress-laminated timber bridge decks Developed in Canada 1976 and lots of research and adoption for Scandinavia during the Nordic

Is "The Bridge" the best Nordic Noir show ever?

Is "The Bridge" the best Nordic Noir show ever? Here's why it's superior to "The Killing" and every other Scandi crime drama.

### Span by Span Casting Method of Bridge Construction

Bridge construction has evolved significantly over the years, with advancements in materials, engineering techniques, and technology. Among the various methods used today, the

### Long Span Bridges in Scandinavia

The Øresund Bridge with its span of 490 m is the longest among cable-stayed bridges for both road and railway traffic.

### This Dramatic Bridge Connects More Than Just Two

This Dramatic Bridge Connects More Than Just Two European Countries July 1, 2000  
The Øresund Bridge, which spans across the Øresund

### A Complete Guide to Visit Denmark Sweden Bridge

The main architecture of the bridge between Denmark and Sweden comprises two approach bridges and a high bridge that spans the Flinte

This underwater bridge between Sweden and Denmark

This underwater bridge between Sweden and Denmark will blow your mind The Øresund bridge is a wonder of engineering, and one of the coolest engineering

The Öresund Bridge

The Öresund Link consists of a 7.8-kilometre-long bridge section with approaches; the Öresund Bridge. The approximately 4 kilometres closest to

Oresund Bridge: Connecting Sweden and Denmark

The bridge crosses the shipping channel of the Øresund Strait in a 490m-long curving span. Engineers designed the bridge with two

What Is the Span of a Bridge and Why Does It Matter?

The span of a bridge is the distance between two adjacent supports. This measurement is the fundamental constraint in bridge engineering, dictating the structural forces, the materials used,

Findings and points of interest of the Nordic Timber Bridge Projects

The remaining half came from national road and bridge authorities and private wood industry enterprises. The common interest and main object of the projects was to increase the

Bridge Between Continents

Bridge Between Continents Note: An increase in seismic activity has been on the Reykjanes Peninsula over the last weeks. As a result, new cracks have

Bridge Between Continents : Iceland Travel Guide :

Reykjanes peninsula lies on one of the world's major plate boundaries. The Bridge between the two continents at Sandvík is a small footbridge and was built as a

Timber bridges in Norway A brief presentation to visitors from the ...

Nordic Timber Bridge Program The main objective was to increase the competitiveness of timber bridges compared with other materials like steel and concrete.

The Øresund link

The Øresund Bridge was inaugurated on 1 July 2000 and is a combined bridge and tunnel link between Denmark and Sweden, more specifically between Amager

## Contact Us

For more information, pricing, or custom solutions, please contact us:

Website: <https://www.truhope.co.za>

Email: [sales@truhope.co.za](mailto:sales@truhope.co.za)

Phone: +27 64 987 3021

Address: 22 Loop Street, Cape Town, 8001, South Africa

This document is for informational purposes only. Specifications subject to change without notice.

