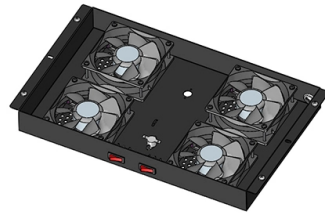


What does AP mean in fiber optic panel



Overview

APC connector is the most widely used fiber connector type today. “APC” stands for Angled Physical Connect. Standard test method used primarily in aerospace and spacecraft applications to evaluate how much an epoxy material outgasses in a vacuum environment to ensure they meet the total weight loss (TML) and condensable volatile material (CVCM) thresholds. Standard Test Conditions run at 125°C (257°F). To navigate the complex world of fiber optics effectively, it's essential to understand the terminology associated with this technology. In this comprehensive glossary, we'll break down the key terms into specific categories for a better understanding. Fiber optics, as a universal technology. Mode: A single path for light to travel within the fiber. Singlemode Fiber (SM / SMF): Fiber with a small core (~9µm) that allows only one mode of light. Used for long-distance, high-speed. Used. What is an SC/APC Fiber Optic Adapter?

An SC/APC fiber optic adapter is a passive mechanical interface used to join two SC connectors that have angled physical contact (APC) ferrules, typically polished at 8°.



Article Content

Fiber Optic Patch Panel

A fiber optic patch panel is a physical hardware device used in telecommunication networks and data centers to connect and manage fiber optic cables. It serves as a centralized point where fiber optic

Understanding Fiber Connector Types ST SC LC FC

When working with fiber optic technology, you'll frequently encounter terms like SC UPC, LC UPC, SC APC, LC APC, FC APC, and FC UPC. These designations

What Is a Fiber Patch Panel? | Fiber Optic Network

Fiber patch panels are used to organize fiber optic cables and connections. They are not active devices, meaning they don't actively filter data (like network

Fiber Optics: Abbreviations, Acronyms and Terminology

This guide offers clear explanations of fiber optics terms from basic types to network designs, passive and active elements, and practical installation

How to choose fiber optic patch panels?

Fosco Connect offers a 288 fibers 4RU rack mount fiber optic enclosure, loaded with 12 slots duplex fiber adapter panels. This high density patch panel provides

Fiber Patch Panels: A Beginner's Guide | RLH

Fiber optic patch panels are enclosures that act as a distribution hub for fiber cable. A bulk (multi-strand) fiber cable enters the patch panel and then each fiber

Fiber Optic Communication Glossary: Comprehensive

Explore a detailed glossary of fiber optic communication terms, covering essential keywords and advanced concepts from A to Z. Perfect for

Fiber Optic Connector Types: A Beginners Guide

The fiber connector types, sometimes referred to as terminations, link fiber optic cables together through terminals, switches, adapters, and patch

APC, UPC, PC Fiber Connector Types Comparison

"APC" stands for Angled Physical Connect. The angle of the ferrule end face is the 8-degree angle, which is very helpful for the tight connection of

What is a Fiber Optic Patch Panel?

A fiber optic patch panel is commonly described as the interface panel that connects multiple optical fiber cables and optical equipment. Patch

Fiber Optic Color Code: The Ultimate TIA-598-C Guide

Master the TIA-598-C fiber optic color code standard. Read our complete guide and use our free interactive calculator to easily identify 1-144 core cables.

Glossary of Terms | Optical Communications | Corning

The rate of optical power loss with respect to distance along the fiber, usually measured in decibels per kilometer (dB/km) at a specific wavelength; the lower the number, the better the fiber's attenuation.

SC/APC Fiber Optic Adapter: A Beginner's Guide

An SC/APC fiber optic adapter is a passive mechanical interface used to join two SC connectors that have angled physical contact (APC)

What is fiber patch panel?

A fiber patch panel is a critical component in a fiber optic network. It serves as a centralized point for connecting and organizing individual fiber optic

The Top 100 Fiber Optics Terms and Acronyms

Optical Fiber: An optical fiber is a thin, flexible medium capable of transmitting light between the two ends of the fiber. Made from high-quality

What is the purpose of a fiber optic patch panel?

Fiber optic patch panels have fiber adapters, including LC, SC, MTP, and more. These adapters serve as the gateways, allowing for easy connection

What Is a Fiber Patch Panel & Why It's Essential for

What Is a Fiber Patch Panel? A fiber patch panel is a mounted enclosure—either rack-mounted or wall-mounted—used to terminate, manage,

Fiber Optics Decoded: A Comprehensive Guide to Key Acronyms

FDP - Fiber Distribution Panel - A device used to distribute fiber optic cables to different locations within a building or network. APC - Angled Physical Contact - A type of connector...

Fiber Optic Patch Panel Explained: What It Is & How It

Learn what a fiber optic patch panel is, how it works, and why it is essential in modern fiber networks. A practical guide for FTTH, data centers, and telecom

Understanding Fiber Connector Types ST SC LC FC

Detailed illustration of APC (Angled Physical Contact) fiber optic connector structure, showing angled ferrule alignment for minimized back reflection in high

The Ultimate User Guide to Fiber Patch Panel

Fiber patch panels play an increasingly important role in the optical fiber network due to the widespread use of high-density cabling systems in data

[SC/APC Fiber Optic Adapter: A Beginner's Guide](#)

A SC/APC fiber optic adapter may look like a simple plastic block, but it has outsized impact on your network's optical budget, reliability, and reflection

[Fiber Optic Terminology & Definitions | Fiber Terms Guide](#)

[Fiber Optic Panel \(FOP\): A panel for managing and interconnecting fiber optic systems.](#) [Fiber Pigtail: A short optical fiber permanently attached to a light](#)

[Fiber Optic Industry Acronyms](#)

This comprehensive reference of standardized fiber optic acronyms is a resource for understanding technical shorthand across networking and

[Everything You Need to Know About Fiber Patch Panels](#)

Find out everything you need to know about fiber patch panels, from connector types to high-density configurations. Choose the best panel for your

[Understanding Fiber Optical Connectors: UPC vs. APC](#)

When picking fiber optic cable, you are often faced with two options – UPC or APC connector. What is the difference between them? Why you need to

[Fiber Optic Patch Panel Types & Best Practices](#)

Explore Fiber Optic Patch Panel Types, Rack-Mount & Wall-Mount Panels, Connectivity Options, Troubleshooting, Upgrades, and Best Practices.

[Glossary of fiber optic network terms](#)

Glossary of fiber optic network terms Suggest a term We're always adding new fiber optic network terms to our list. If you can't find what you're looking for, get in

[Understanding Fiber Patch Panels: A Comprehensive](#)

A fiber patch panel is essential in assisting with this issue as it provides a systematic method of terminating, connecting and organizing fiber

Contact Us

For more information, pricing, or custom solutions, please contact us:

Website: <https://www.truhope.co.za>

Email: sales@truhope.co.za

Phone: +27 64 987 3021

Address: 22 Loop Street, Cape Town, 8001, South Africa

This document is for informational purposes only. Specifications subject to change without notice.

